



Western Intake Partnership Briefing to Triangle Water Supply Partnership

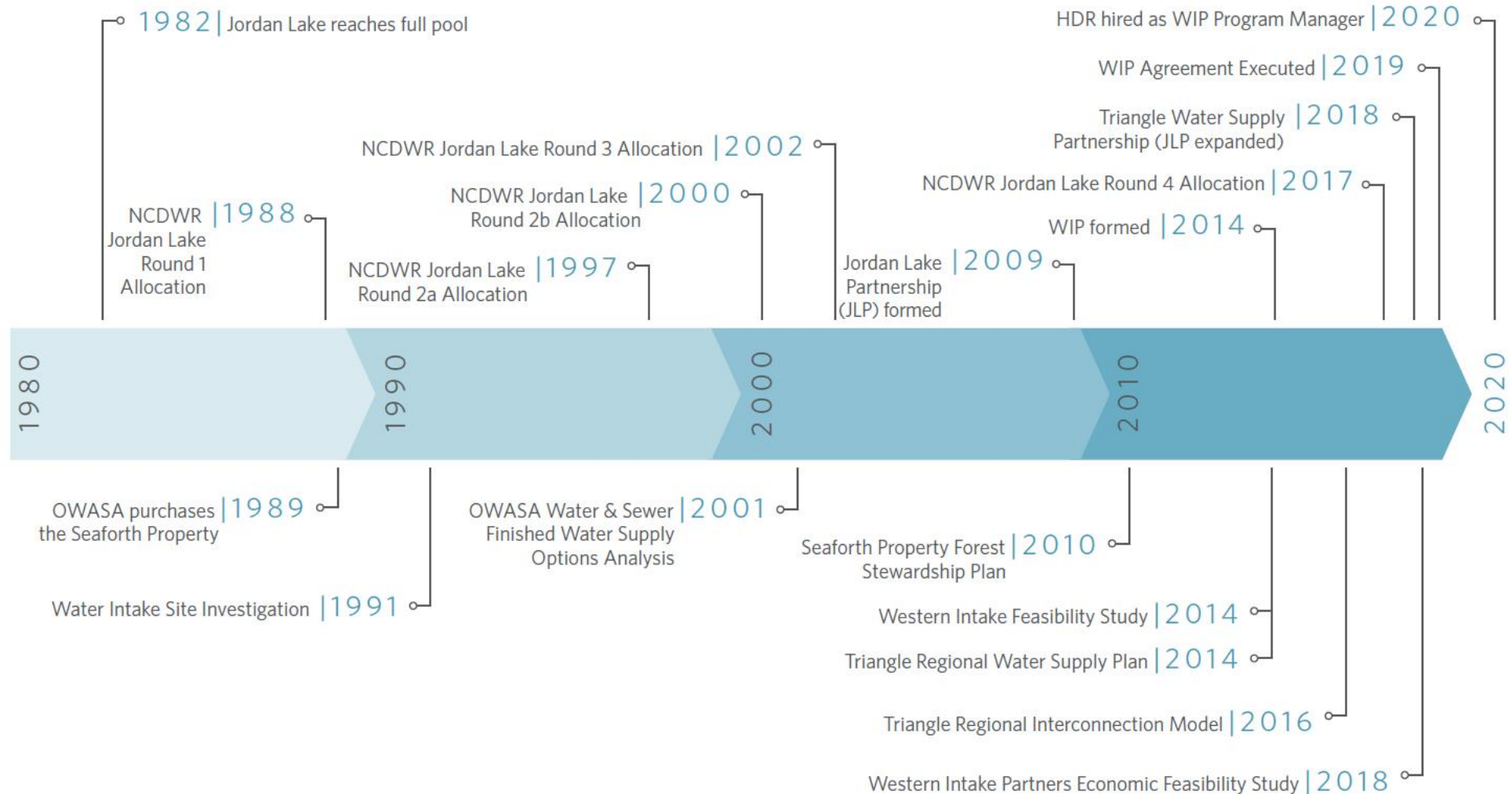


October 2, 2020



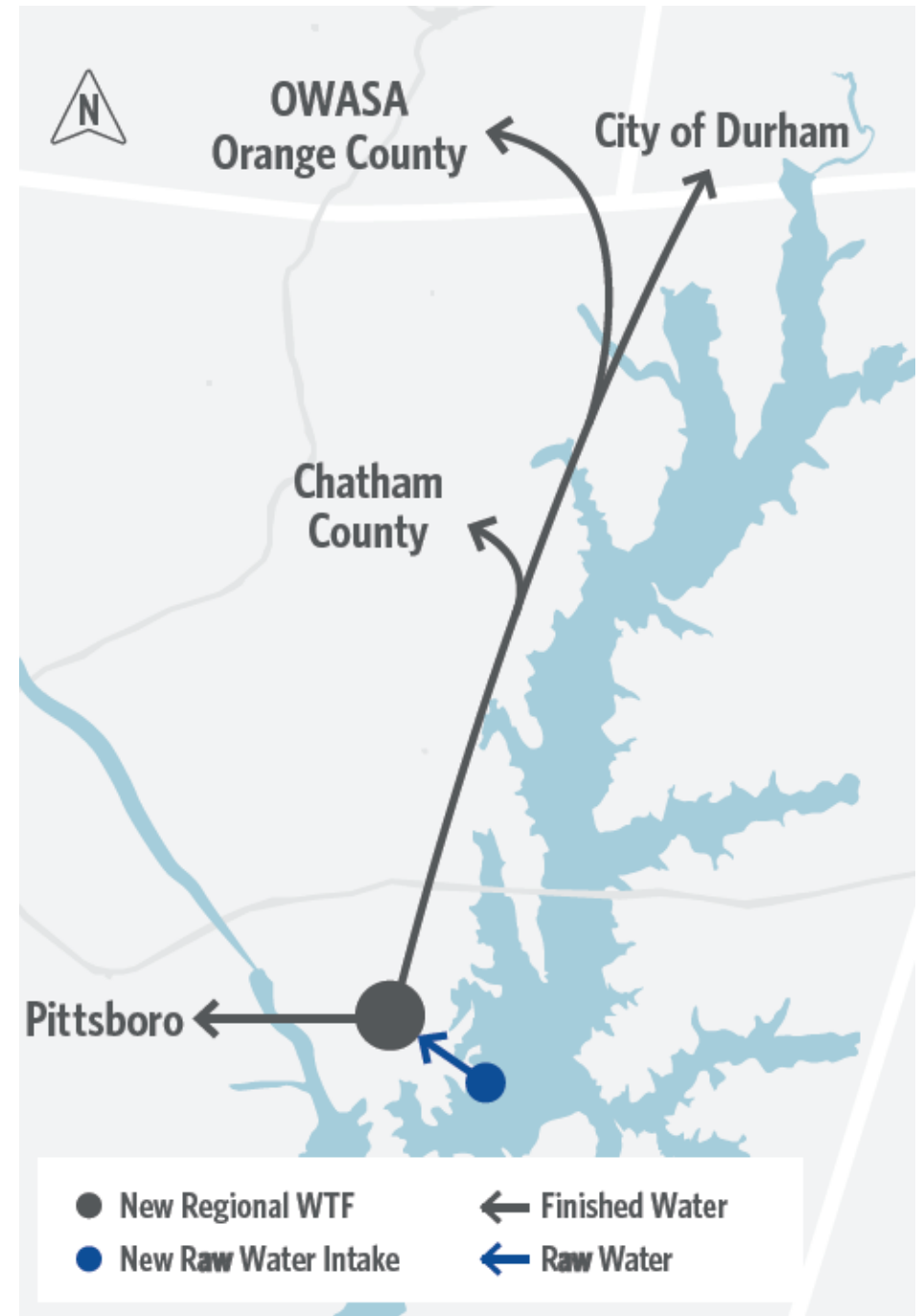
WIP Background

Timeline of Major Milestones for the Western Intake on Jordan Lake



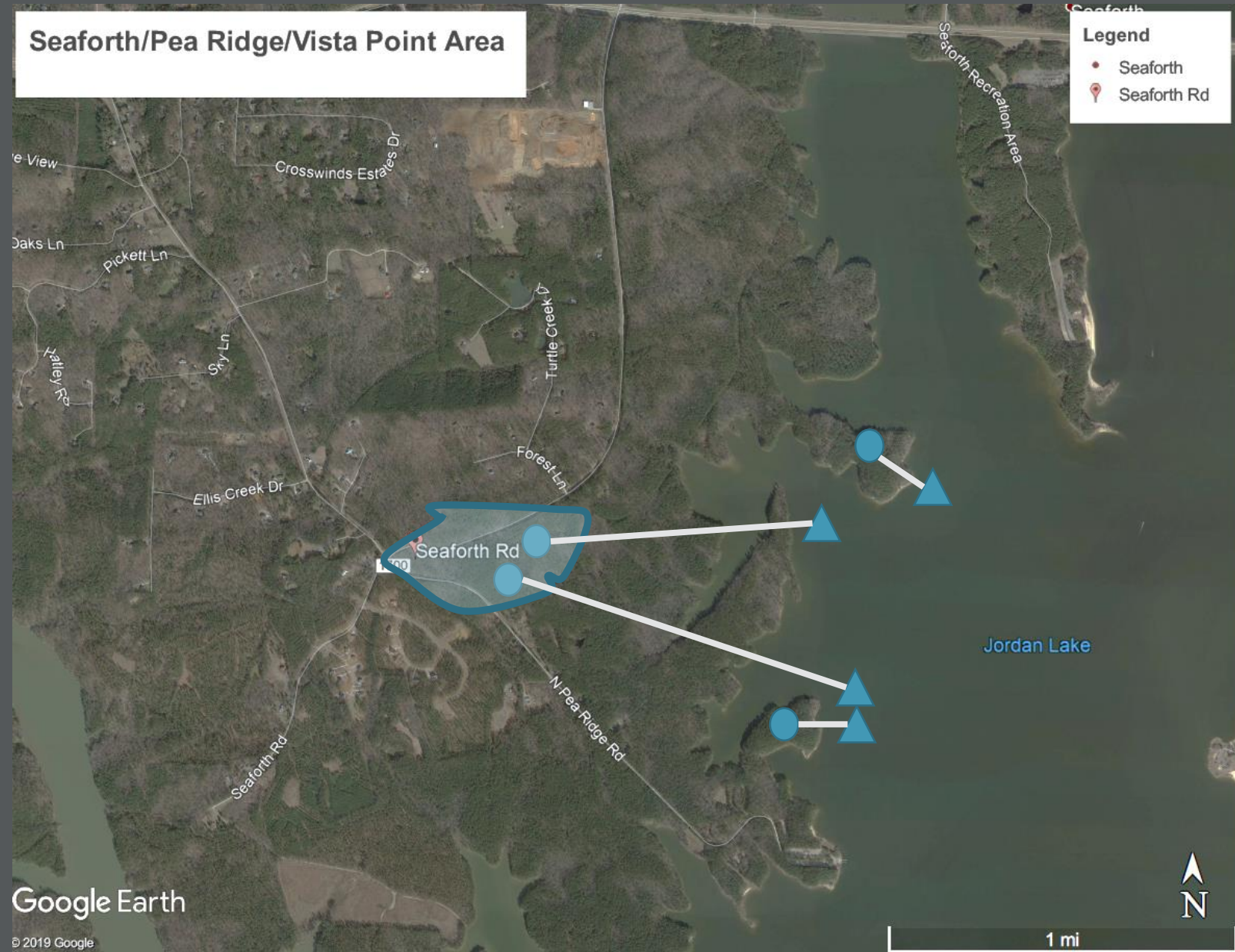
Program Overview

- New Raw Water Intake in Jordan Lake & Raw Water Main
- New Regional Water Treatment Facility (WTF)
- Finished Water Transmission Infrastructure

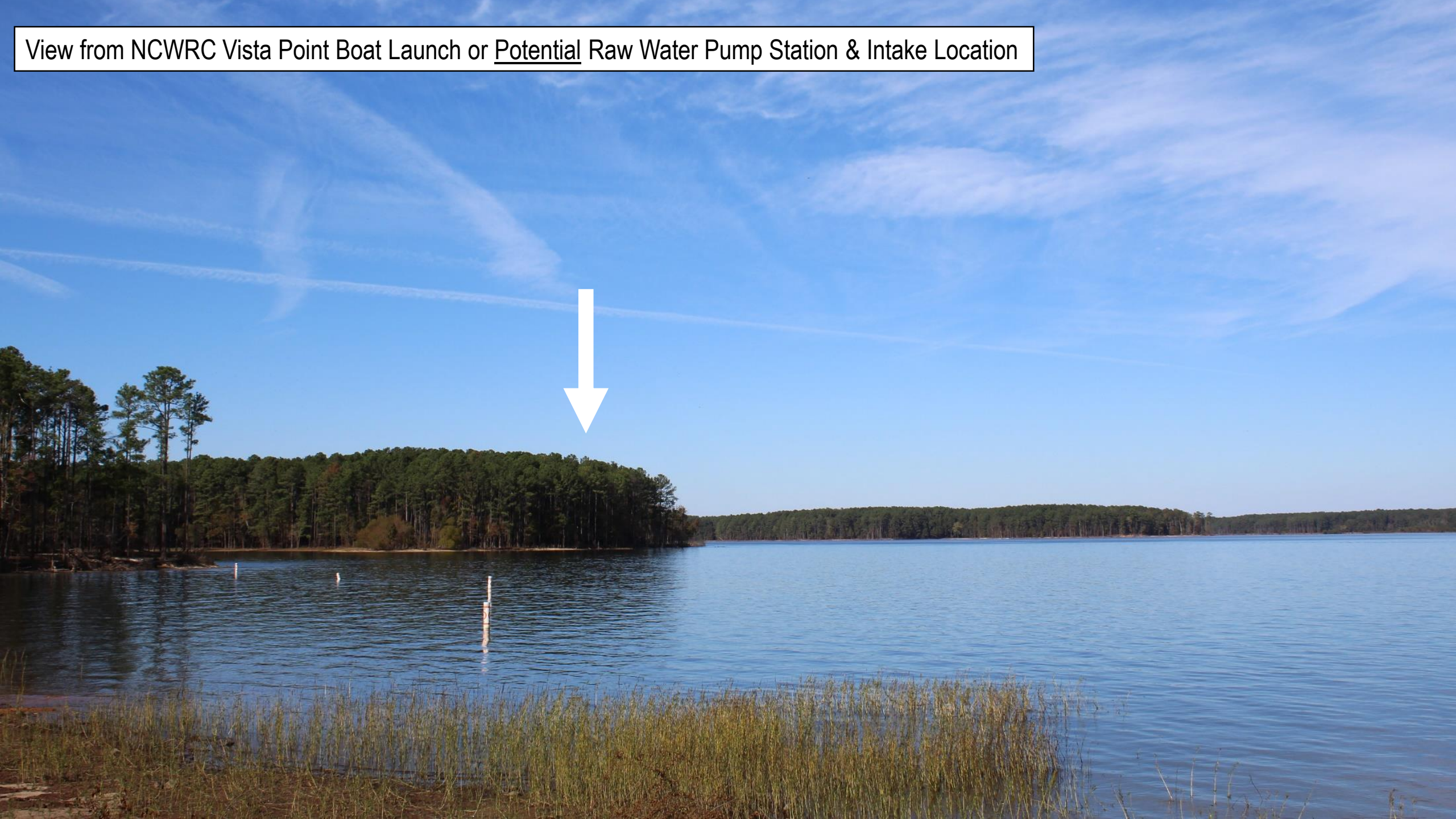


Raw Water Intake

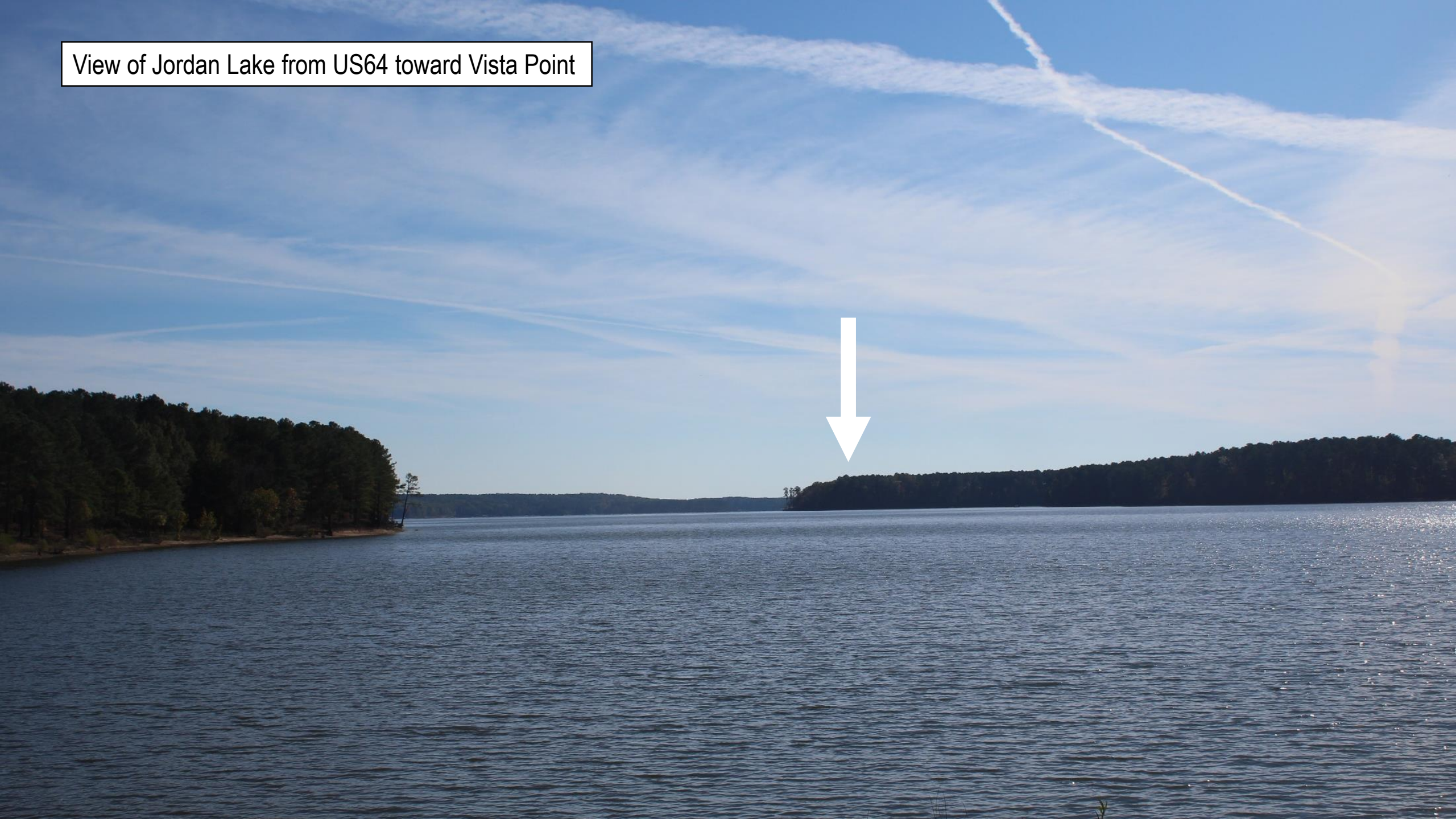
Baseline is the 1991
CH2M HILL Raw Water
Intake Site Investigation
Study



View from NCWRC Vista Point Boat Launch or Potential Raw Water Pump Station & Intake Location



View of Jordan Lake from US64 toward Vista Point



Seaforth Road, adjacent to OWASA Seaforth Property



Seaforth Road looking toward intersection with Peak Ridge Road, adjacent to OWASA Seaforth Property



Seaforth Road, new residential development in vicinity of OWASA property



Seaforth Road, direction of US 64 (Potential pipeline route)



Seaforth Road, picture taken from US 64 (Potential pipeline route); cleared area is new Seaforth High School (to open in 2021)



Program Scope & Schedule Overview

Phase 1

Program Initiation, Preliminary Engineering & Permitting
(2020-2023)

Phase 2

Design and Bidding
(2023-2026)

Phase 3

Construction
(2026-2030)

Phase 1 Schedule Overview

2020:

- Began late August 2020
- Kickoff & Initial Workshops
- Develop Environmental Review Approach
- Preliminary Project Scope/Schedule Decisions
- Prepare Preliminary Projects Consultant RFQs

2021:

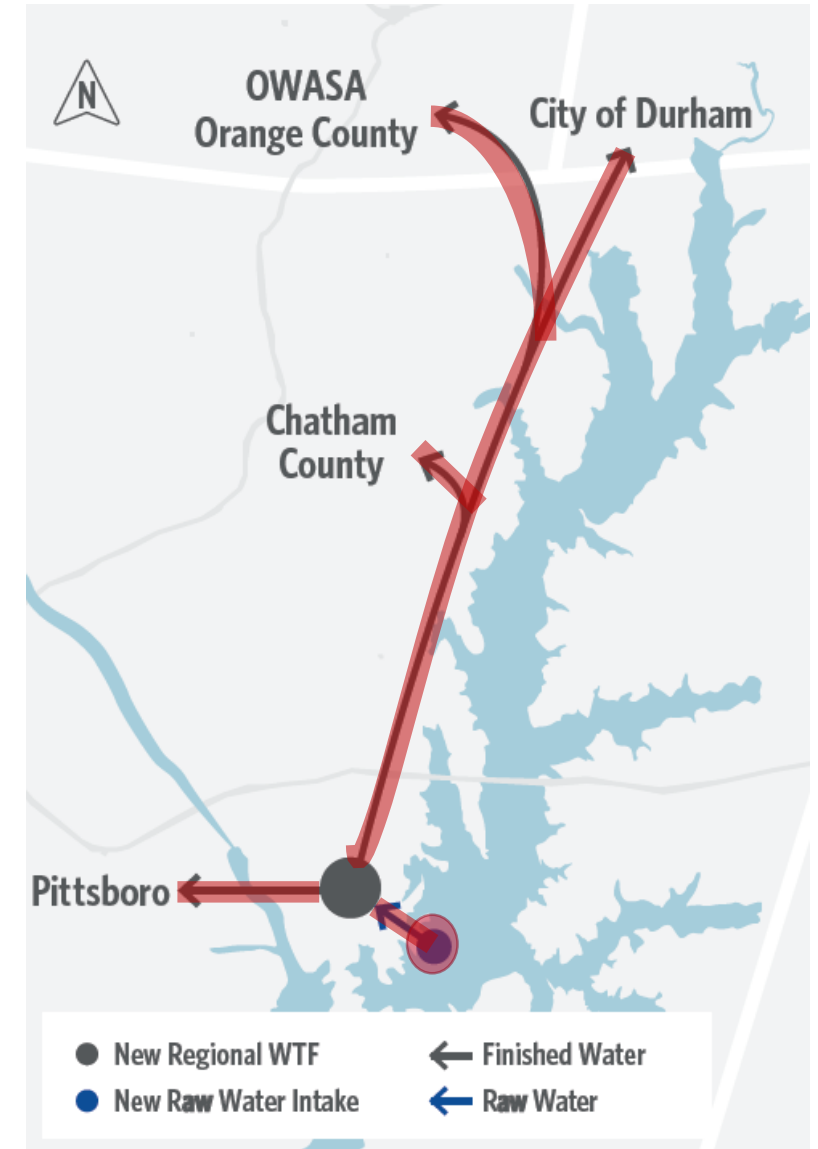
- Preliminary Projects Consultant Procurement
- Strategic Communications Plan
- Start Preliminary Projects
 - *Governance*
 - *WTP PER*
 - *Intake/Pipeline PER*
 - *Environmental Permitting*

2022-2023:

- Continue/Complete PERs in 2022
- Environmental Permitting Decision
- Construction Delivery Decision
- Align Phases 2 (design) & 3 (construction) with Construction Delivery Method

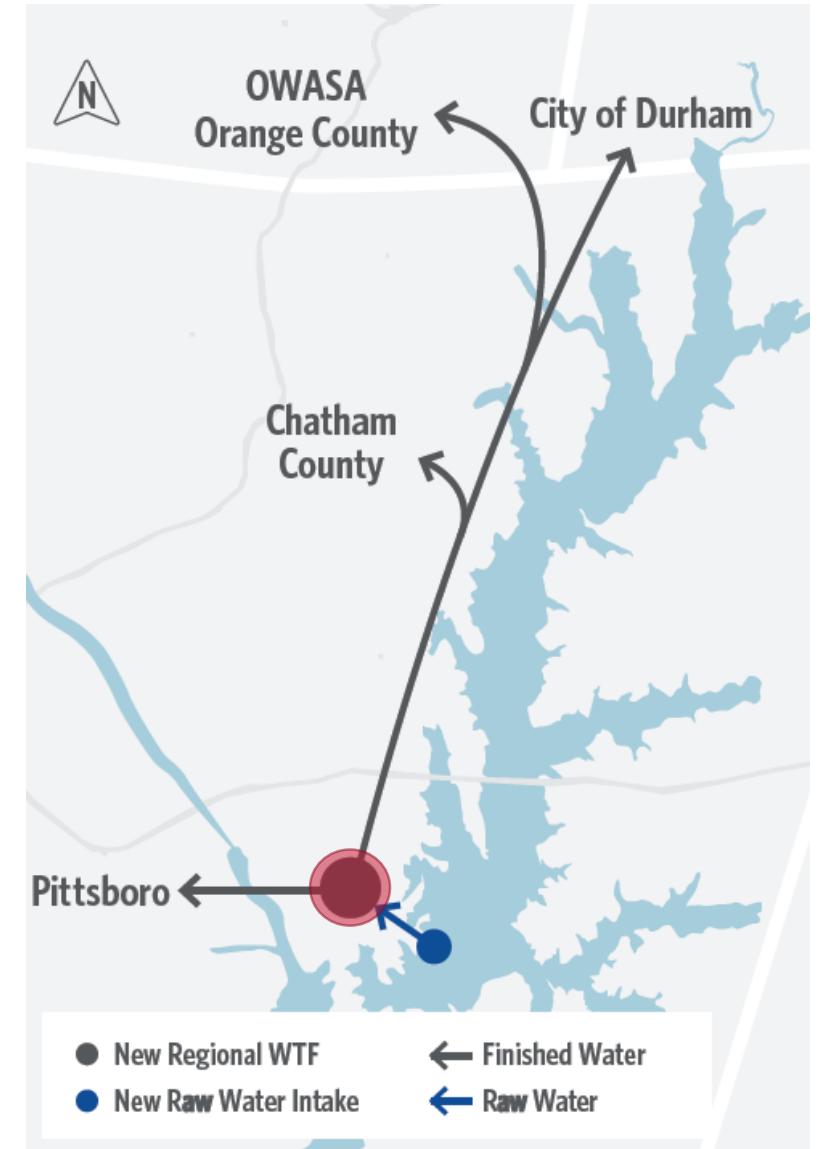
Raw Water Intake & Water Transmission Infrastructure Preliminary Engineering

- Design Criteria – Design Standards
- Identify Easement & NCDOT Requirements
- Field Evaluations
- Intake/Raw Water Pump Station Siting Study
- Pipeline Routing Studies
- Hydraulic Evaluations
- Cost Opinion
- Address how Alternate Delivery would affect project
- Intake & Pipeline PER



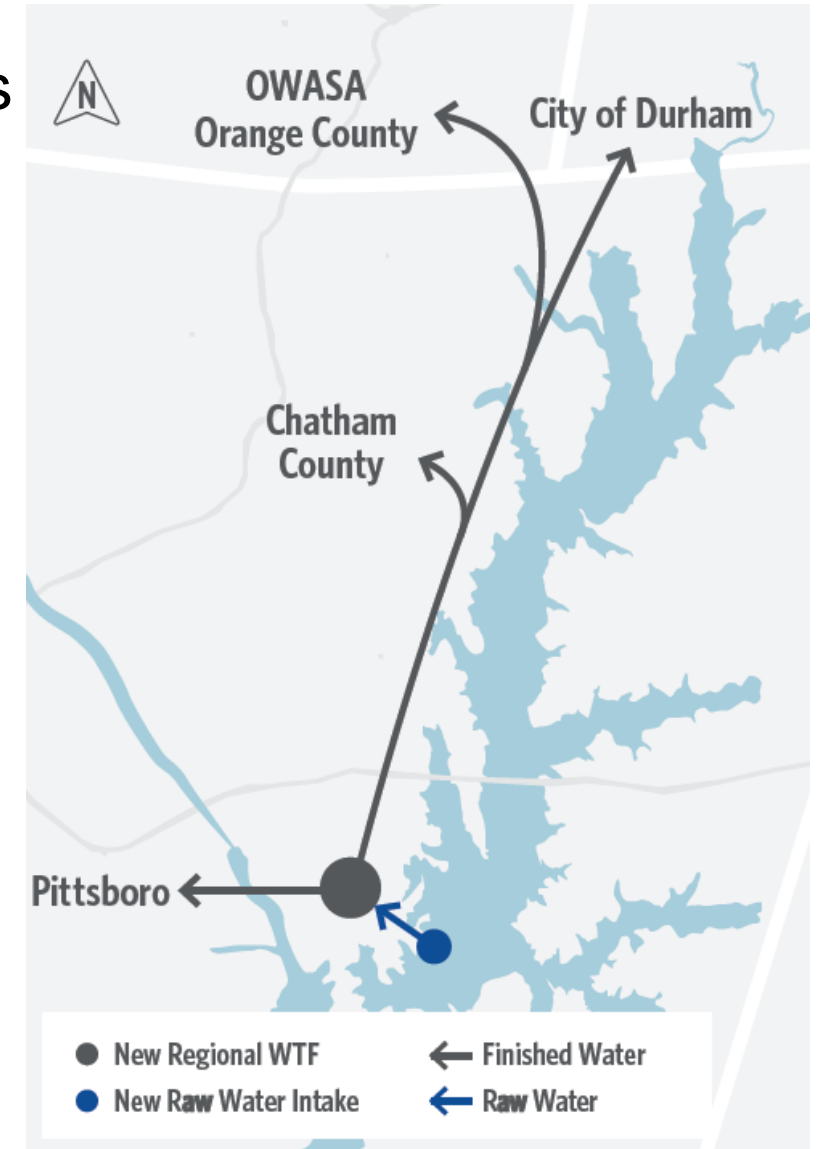
Regional WTF Preliminary Engineering

- Design Criteria – Design Standards
- Field Evaluations
- Source Water Treatability Study
- Treatment Process Design
- Site Planning
- Cost Opinion
- Address how Alternate Delivery would affect project
- WTF PER



Environmental Permitting

- Coordinate with Preliminary Engineering Consultants
- NEPA/SEPA Process
 - EA/EIS?
 - Public Involvement
- Stream and Wetland Delineation
- USACE Land Use Request
- 401/404
- Advise WIP on Regulatory Approval Issues through Record of Decision



Governance

- Facilitated investigation of Partnership Governance options, analysis and decisions.
- Policies for WIP project development, permitting, design, construction, management & operation
- How does the Partnership
 - ... Make decisions?
 - ... Share ownership of land and facilities?
 - ... Share costs?
 - ... Generate revenues?
- Organizational Development





Path Forward

Schedule for RFQ/RFPs



- October: WIP confirms Preliminary Projects scopes/schedule
- October - December: Draft and revise RFQ/RFPs
City of Durham establishes MBE/WBE requirements
- January: 1st RFQ/RFP posted (dates TBA)
- February: Begin receiving RFQ/RFP responses

Near-term Path Forward

Initial Workshops: Through January



Preliminary Projects Scoping and Consultant RFQs/RFPs: October-January



Communications Planning: November-February & Beyond



